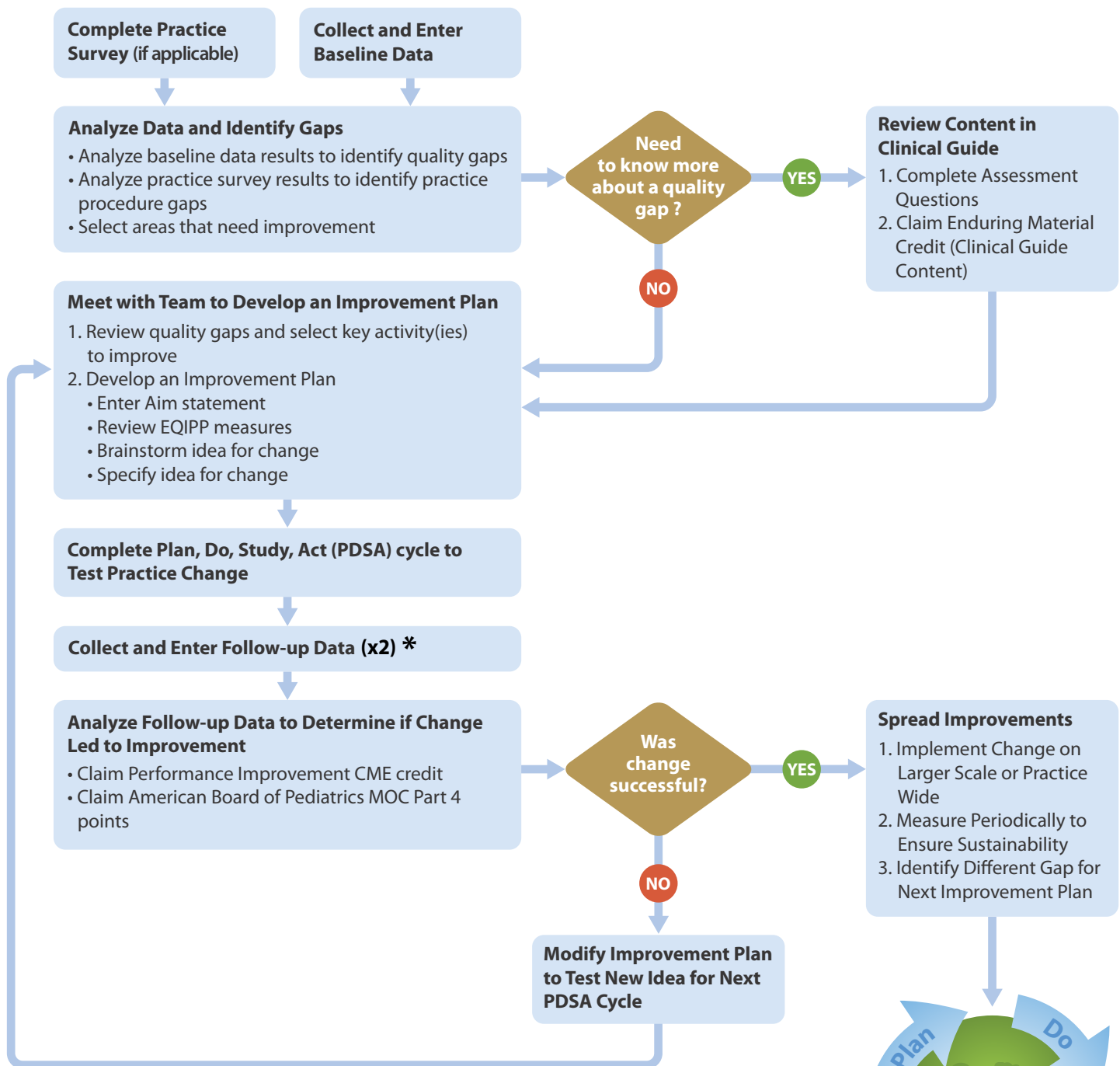


# EQIPP Course Flow



\* The American Board of Pediatrics (ABP) requires completion of two follow up data cycles to meet Maintenance of Certification (MOC) Part 4: Performance in Practice requirements. In EQIPP, a data cycle consists of Baseline data entry, an improvement plan, and followup data entry. You will be eligible to claim Performance Improvement (PI) Credit and notify the ABP upon completion of the 2nd follow up data cycle.

